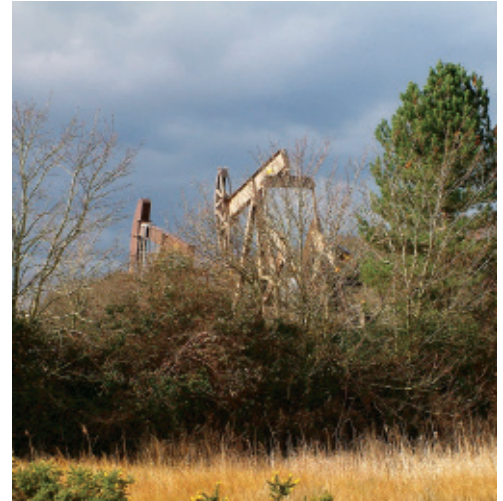


# Nicholas Pearson Partnership LLP

Historic Landscapes • Landscape Management • Landscape Design

## Project Example

## Wytch Farm Oilfield



### Client

Perenco UK Ltd

### Our contributions

- Landscape Management Plans
- Restoration Plans
- Estate maintenance inspections and advice

Wytch Farm Oilfield is the largest onshore oilfield in Western Europe, and has received numerous environmental awards since its inception. We have advised the operators of the oilfield since 1983, which has included the preparation of landscape and visual impact studies, land management and restoration proposals for all aspects of development including onshore wellsites, processing and pipeline facilities, and operation of Furzey Island, in Poole Harbour.

The Wytch Farm Oilfield is located within the most sensitive areas, including an AONB, Heritage Coast, Special Areas of Conservation, Special Protection Areas, Ramsar sites and Sites of Special Scientific Interest. Since 1983 we have provided detailed design consultancy and construction supervision on the Furzey Island development in Poole Harbour, and for the Isle of Purbeck mainland facilities. We have also provided support in the preparation of planning applications for development components.

In 2011 BP sold its interests in the Wytch Farm, Wareham, and Kimmeridge oilfields to Perenco UK Ltd. We are currently helping Perenco secure an extension to the operational life of these oilfields, including new land management and restoration plans for all oilfield sites, which now fall within the context of the *Wild Purbeck* Nature Improvement Area.